

GLASS IS LIFE™

 makers of pure, sustainable,
brand-building glass packaging

O-I Manufacturing Italy S.p.A.

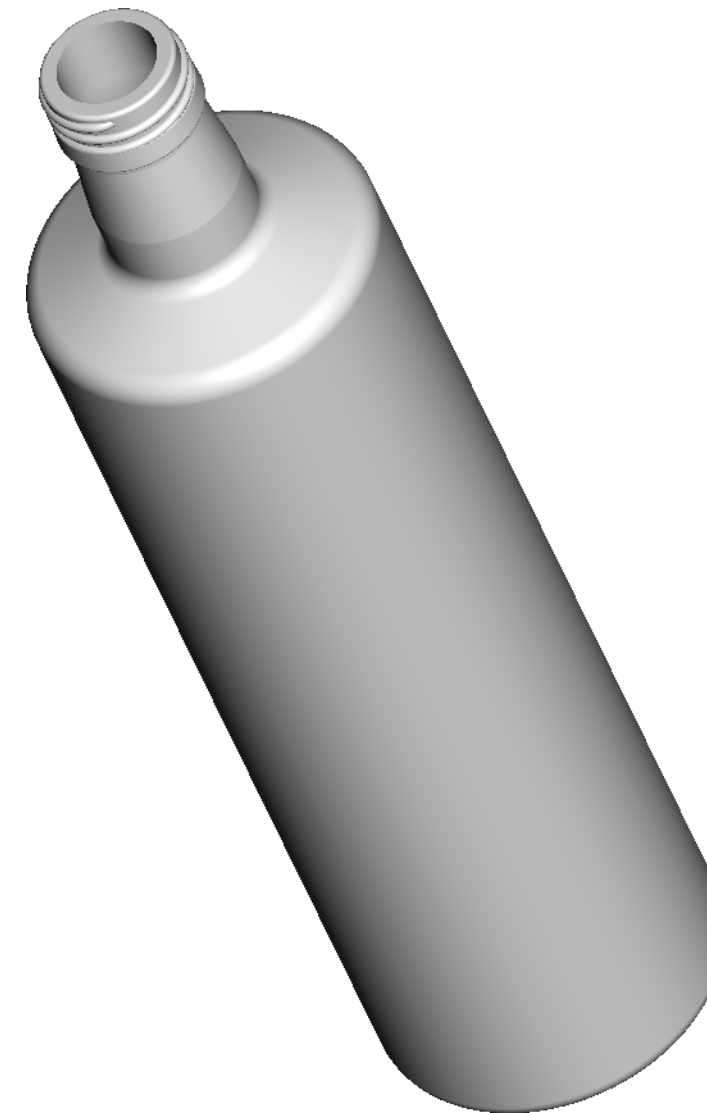
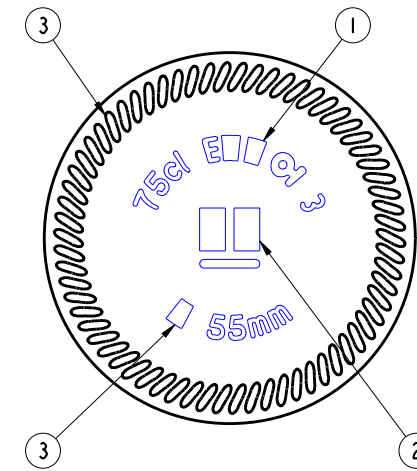
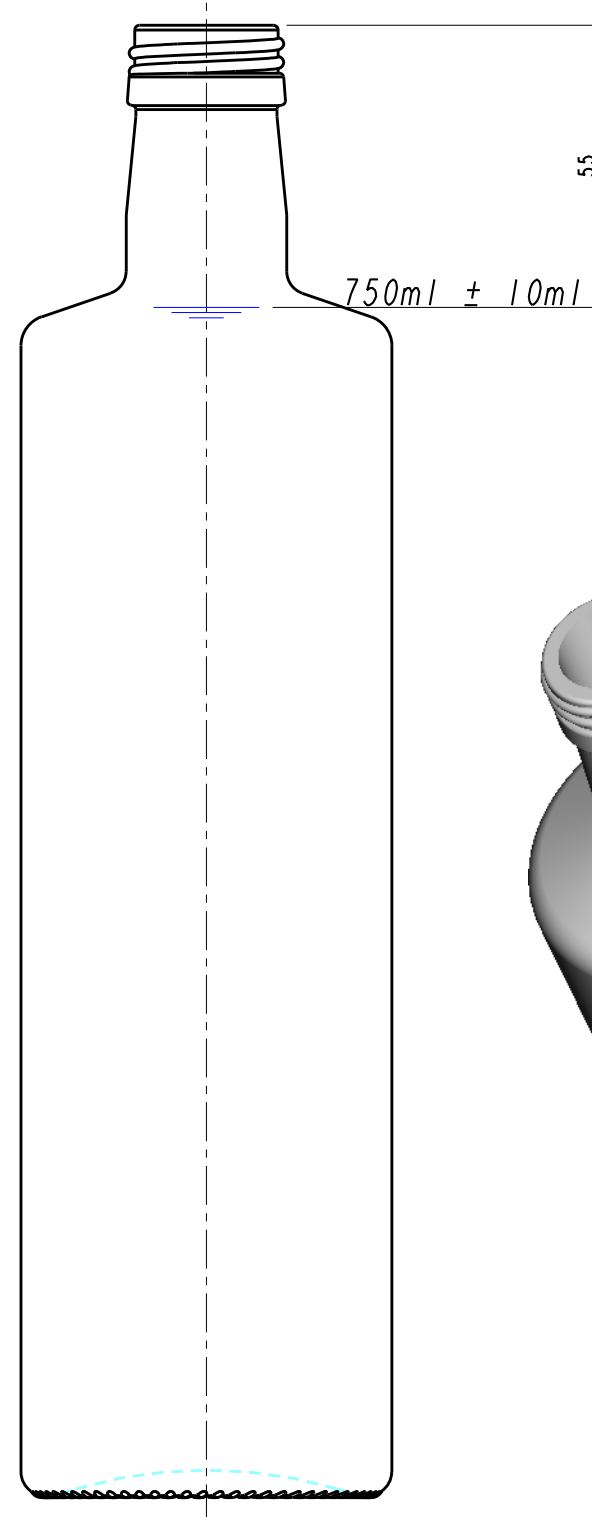
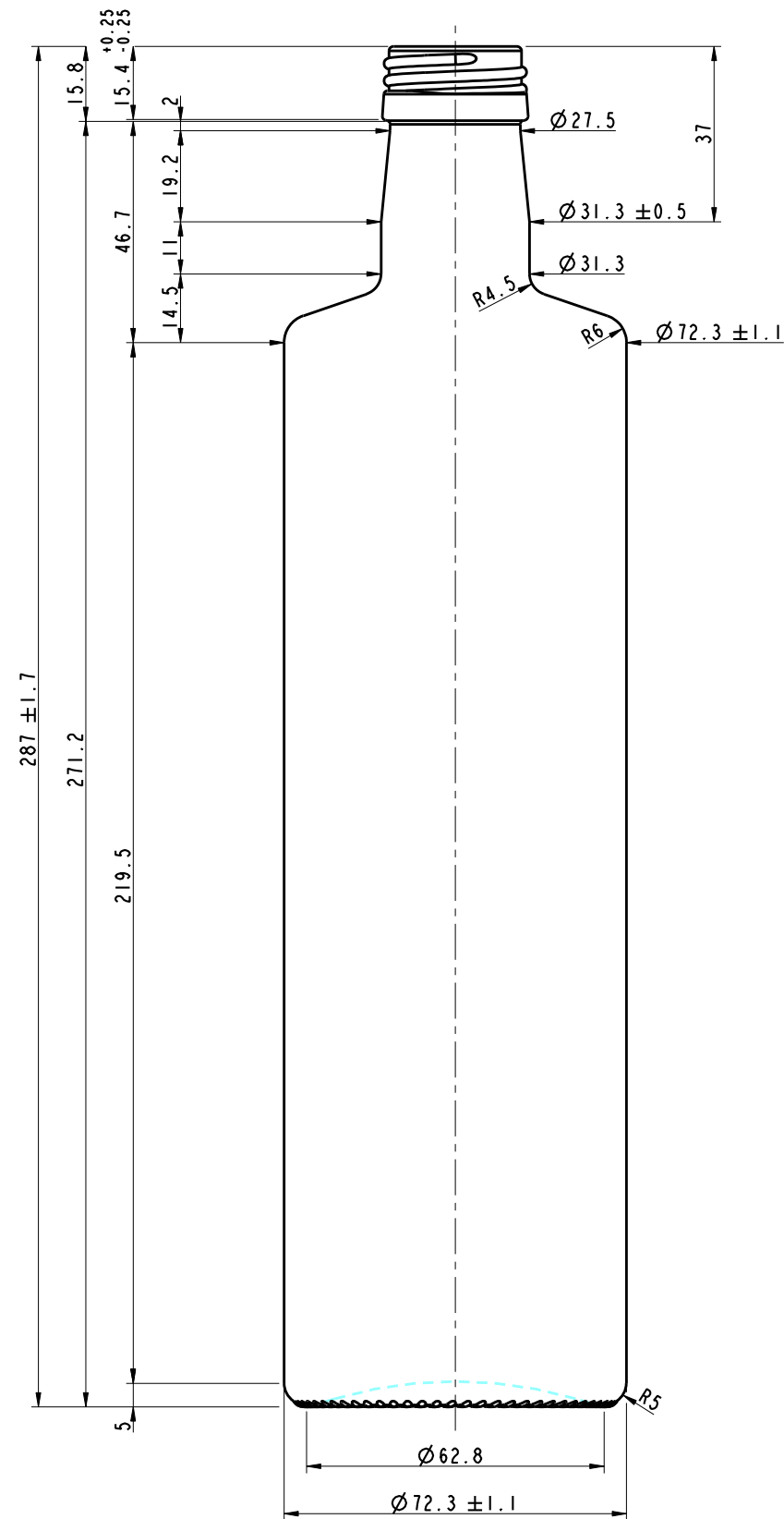
Via 1° Maggio, 18
21040 Origgio(VA), Italy
Tel. +39 0243463.1

CONTAINER & MOULD ENGINEERING EUROPE

NOTES:
THIS DRAWING IS THE PROPERTY OF O-I AND
MUST NOT BE REPRODUCED OR DISCLOSED
WITHOUT O-I WRITTEN AUTHORIZATION.

ONLY TOLERANCED DIMENSIONS ARE GUARANTEED.

MANUFACTURING MARKINGS SHOWN ARE FOR ILLUSTRATIVE
PURPOSES ONLY, ACTUAL MARKINGS ON CONTAINER
MAY DIFFER, DEPENDANT ON LOCAL LEGISLATION.



TENTATIVE

1 = TRADEMARK
2 = CAVITY No.
3 = STIPPLING
THE SHAPE OF STIPPLES IS ONLY AN
INDICATION AND THE CONSTRUCTION IS AT
THE PRODUCTION PLANT DISCRETION.
4 = CAVITY CODE
5 = A GLASS INDENTIFICATION

SCALE 1:1

CATEGORY FOOD		TLT ANGLE 14.95°	
MAX. VERTICALITY TOLERANCE 3.2 mm		MEASURING CONTAINER YES	
FINISH SAP NUMBER 0841		FINISH REF. UNI 6144 1988 - UNI 10155 1993	
MINIMUM THROUGH BORE 18.5 mm		MAX FILLING TUBE Ø 17 mm	
CONTAINER OVERFLOW CAPACITY (BRIMFUL) 773ml APPROX.			
CONTAINER RATED CAPACITY (FILLPOINT) 750ml ± 10ml			
CONTAINER WEIGHT 500g APPROX.			
FINISH DESIGNATION IT_31.5_UNI 6144_H158_0841		MAX GAS VOLUME	
PROCESS	RETURNABLE NO	IPSO 6193	
STANDARD 75 cl DORICA			
DESIGNER	GP	DATE	28/03/12
CHECKED		DATE	
DRAWING NUMBER 120209		MOULD/SAP NUMBER 00000	

No	DATE	REVISIONS	DESIGN/CHECK